



S&K Theatrical Draperies
7313 Varna Avenue
North Hollywood CA 91605
United States

True custom solutions since 1965

FABRIC SPECIFICATION SHEET



54" Magic Velour 32 oz. FR (Pussywillow)

#100066

Yards per Roll / Bale: 50 yards (+/-)

Fabric width: 54" (4'6" - 137 cm)

Availability: Full roll or more

Weight per linear yard: 32oz (907g)

Fiber content: 100% cotton

FR class: FR - Flame Retardant

FR test: California Title 19 - Canadian ULC S-109 - NFPA 701
- Small Scale - NFPA 701 - Test Method#1 - British Standard
C-14101 - ASTM E-84

Our Heaviest Weight Cotton Velour

The heaviest weight 100% cotton Velour in the market. This fabric combines an extra long nap with a plushy texture that provides a rich matte look, total opacity and superior sound dampening. Magic Velour is a heavier and thicker fabric alternative to Memorable Velour.

Stocked in black. Colors sold in full roll increments.

NOTE: Color on cotton velour will fade overtime if exposed to direct sunlight.

This fabric is also lab tested and rated for its acoustical properties:

Noise Reduction Coefficient NRC: 1.05 *

Sound Absorption Average SAA: 1.04 *

*Pleated with 100% fullness, nap down.

Magic Velour meets the minimum requirements of flame resistance established by these tests:

- NFPA 701 – Small Scale
- NFPA 701 – Test Method#1

Store Hours: Monday – Friday from 8AM – 4:30PM PST

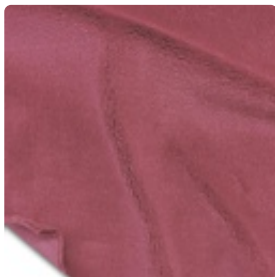


S&K Theatrical Draperies
7313 Varna Avenue
North Hollywood CA 91605
United States

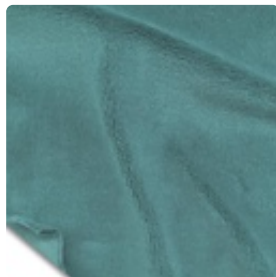
True custom solutions since 1965

- California Title 19
- Canadian ULC S-109
- British Standard C-1410
- ASTM E-84

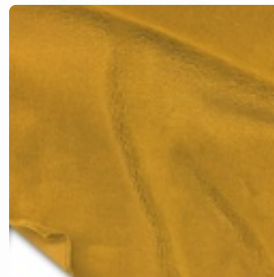
FABRIC COLOR TABLE



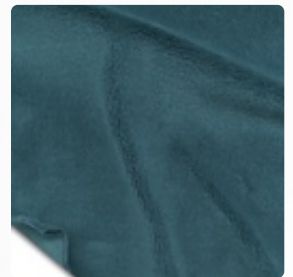
American Ash Rose
#100034



Aqua
#100035



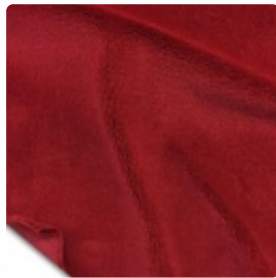
Brandy
#100037



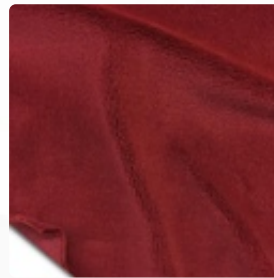
Cadet Blue
#100039



Chamois
#100040



Cherry
#100041



Colonial Brick
#100042



Copen Blue
#100043

Store Hours: Monday – Friday from 8AM – 4:30PM PST



S&K Theatrical Draperies
7313 Varna Avenue
North Hollywood CA 91605
United States

True custom solutions since 1965



Copper
#100044



Cornflower
#100045



Crimson
#100046



Delft Blue
#100047



Doeskin
#100048



Eggplant
#100049



Gold
#100050



Green
#100051



Hunter
#100052



Hyacinth
#100053



Ice Blue
#100054



Ink Blue
#100055



Old Jade
#100056



Maize
#100057



Moleskin
#100059



Persimmon
#100062

Store Hours: Monday – Friday from 8AM – 4:30PM PST



S&K Theatrical Draperies
7313 Varna Avenue
North Hollywood CA 91605
United States

True custom solutions since 1965



Pink
#100064



Plum
#100065



Pussywillow
#100066



Regal Red
#100067



Ash Rose
#100068



Ruby
#100069



Wheat
#100070



Black
#100077



Navy
#100078



Pewter
#100079



Mocha
#100080



Red
#100081



White
#100082



Peacock
#100160



Brown
#100161

Store Hours: Monday – Friday from 8AM – 4:30PM PST